



A VIEW ON
INLAND
CONTAINER
DEPOT,
WHITEFIELD,
BENGALURU
560 066





CONCOR – A Navratna PSU

- Container Corporation of India Ltd., commenced its operations in 1989 by taking over a network of 7 ICDs from Indian Railways.
- Market Leader - 75% of Rail based container movement.
- As a Public sector undertaking under Ministry of Railways, CONCOR began its operations in November, 1989.
- CONCOR is operating a pan-India network of 79 terminals, Inland Container Depots (ICDs), Port Side Container Terminals and Domestic Terminals.
- CONCOR has been elevated as NAVRATNA PSU status by Govt. of India and it is the First and only Public Sector Undertaking under Ministry of Railways to achieve this milestone.





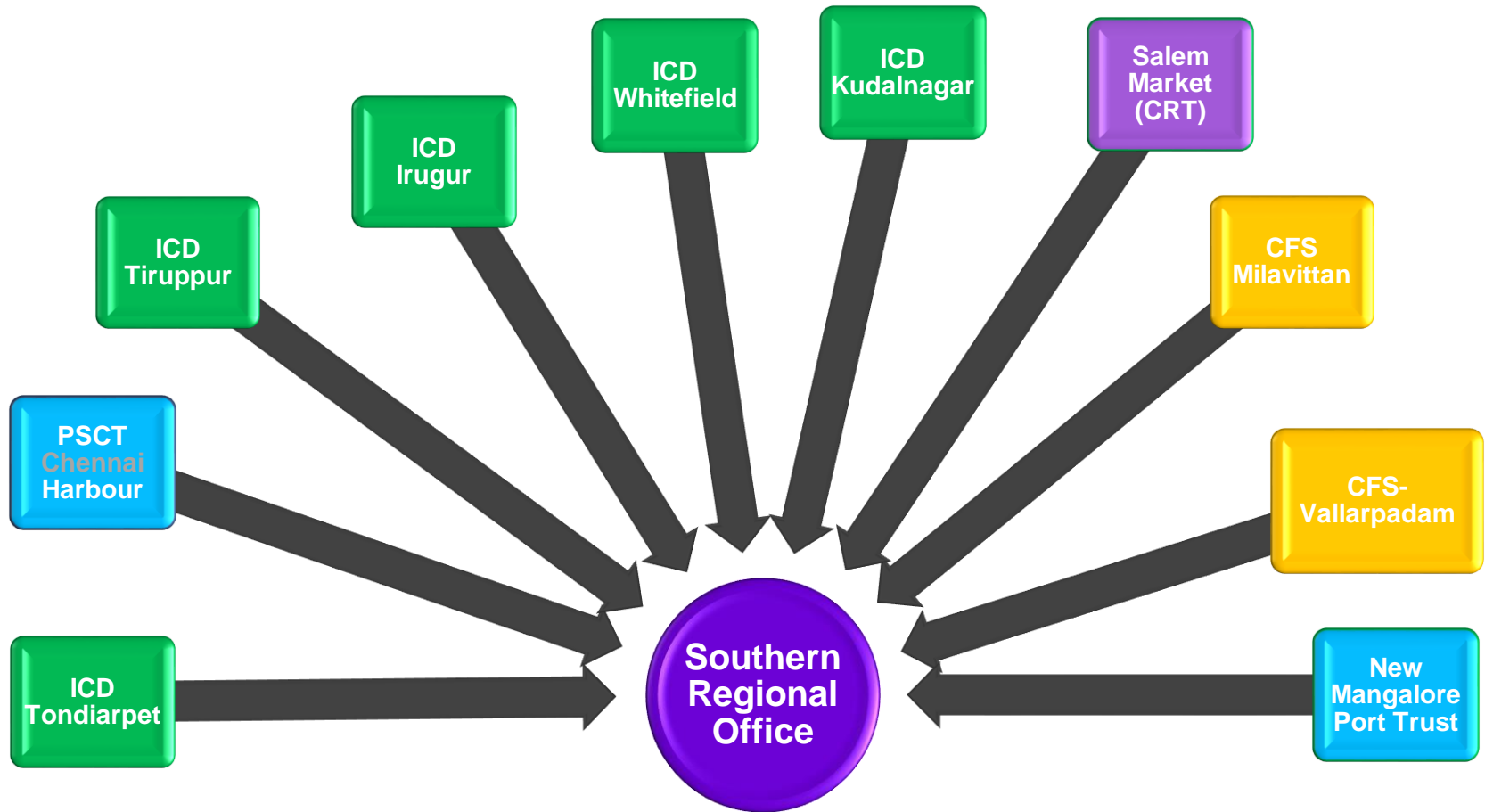
CONCOR – A NAVRATNA PSU



- Operating Turnover - 6167 Cr + 10%
- Gross Turnover - 6470 Cr + 9.75%
- Net Profit - 1049 Cr + 22.26%
- Cap. Expenditure - 857 Cr (6000cr. Next 5yrs)
- Net worth - 9401 Cr
- Market Capitalization - 30345 cr.
- Market share - Exim - 75%





Terminals of Southern Region



 Inland Container Depot
 Container Rail Terminal

 Container Freight Station

 Port Side Container Terminal



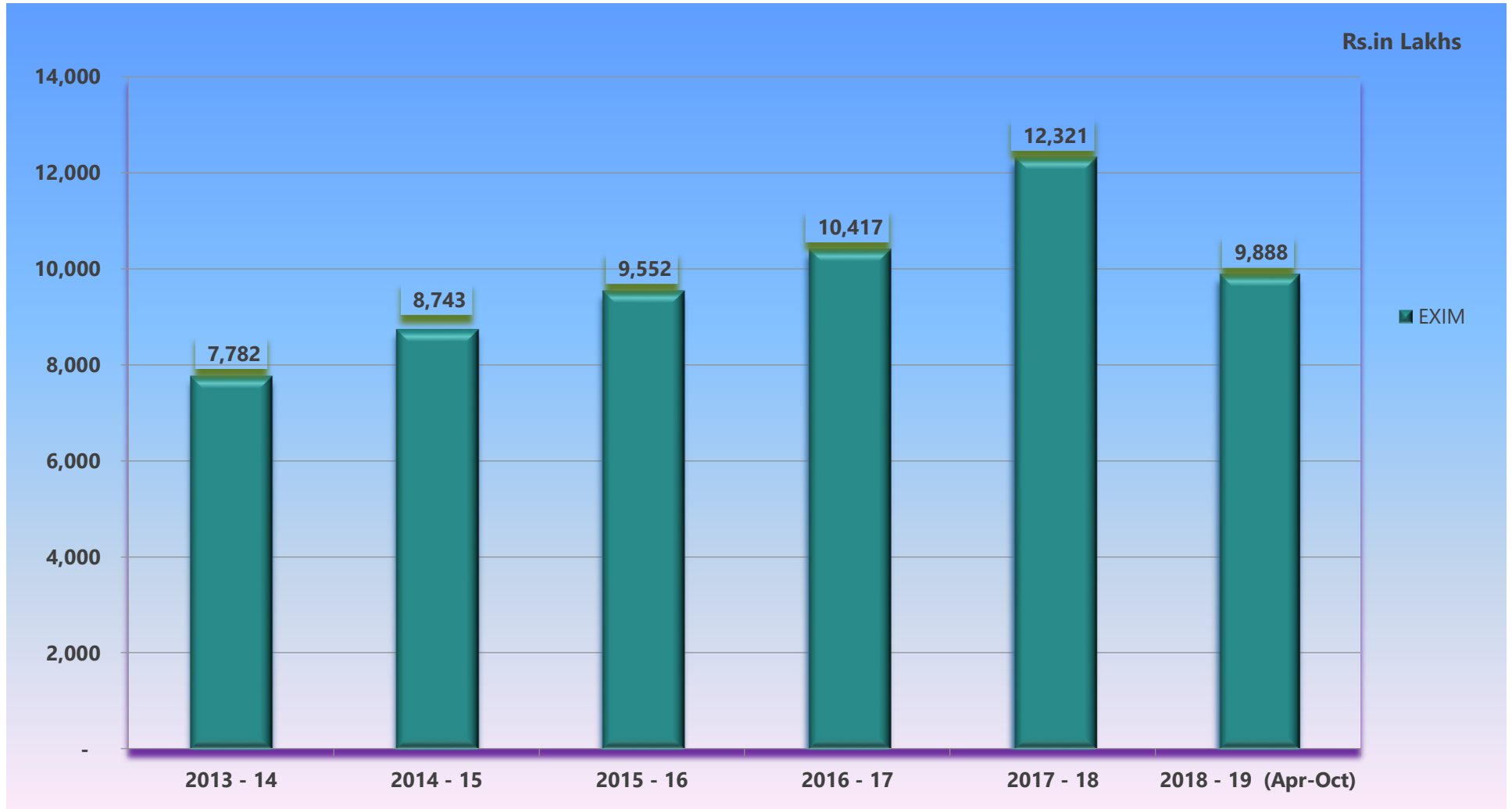
CONCOR- ICD – WHITEFIELD (WFD)

- Inaugurated in April 1993.
- South India's Largest ICD Facility
- Total Area of 125.06 acres
- Four full fledged Rail sidings (90TEUs each)
- Total services for the International and Domestic trade



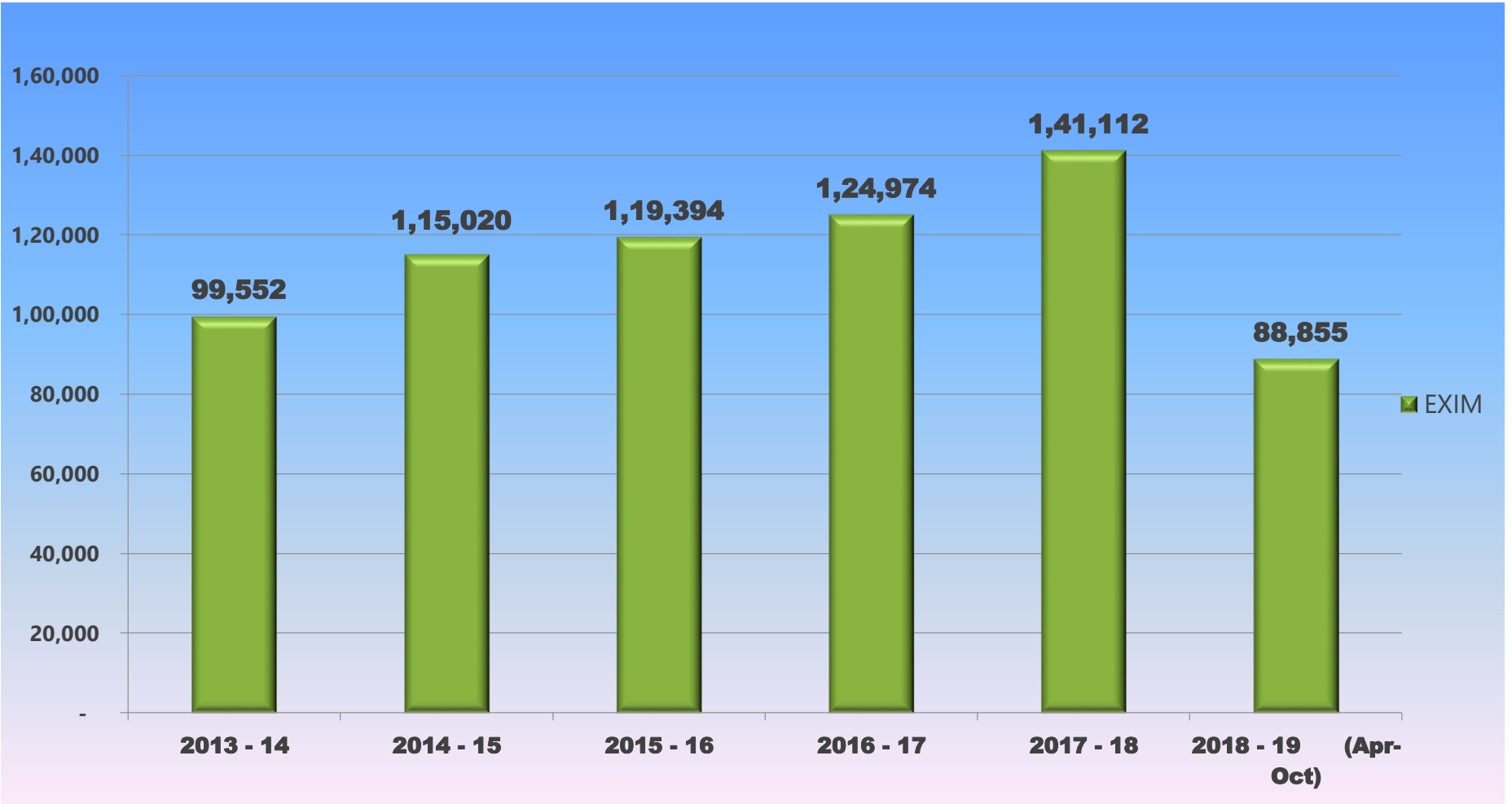


ICD/WFD EXIM Throughput Performance





ICD/WFD Earnings through the years





PORT CONNECTIVITY

- Scheduled Train connectivity for EXIM movements from ICD/WFD to HOM(Chennai) – Daily two trains
- PKPK (Krishnapatnam) - Weekly two trains
- Ennore Port (Katupalli) – Newly introduced on weekly basis
- Connectivity from ICD/WFD to Delhi(TKD), Kolkata(SHM) & Guwahati (AMJ)





ICD – WFD RAIL INFRASTRUCTURE

RAIL SIDING

Four full length siding circulating area with heavy duty (m50cc) paving – three for International and One for domestic

WAGONS

Nine dedicated rakes of 45 flats each for international traffic





ICD – WFD Cargo Care Facilities

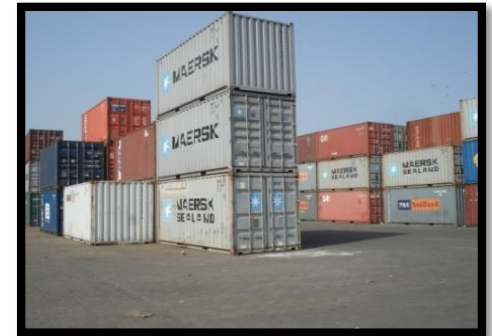
- 13 warehouses 40525 sq. mtrs.
- Dedicated area for granite (5000 sq.mts)
- Cold storage for perishables
- Separate warehousing for dangerous goods
- Multi stacking facility for white goods
- Full fledged Custom facilities with EDI





ICD – WFD Facilities

- Warehousing for import and export cargo
- Bonded space in EIGHT warehouses
- Container Stacking and repairs
- Office complex availability for customers
- Less than Container Load (LCL) consolidation and Reworking of LCL cargo at nominated hubs
- Round – the – clock surveillance with 54 CCTVs for warehouses and CPY





INCENTIVES FOR CUSTOMERS

- 45 Days Free time - International Loaded Cont.
- 90 Days Free time - Empty containers.
- Volume Discount Scheme for Importers and Exporters.
- One month credit facility to all major Importers, Exporters and Shipping Lines.
- POS facility for Cashless transactions.





Upcoming Projects

- Introduction of rail movements from Ennore Port to ICD/WFD
- New rail siding at Mangalore port for EXIM and domestic handling
- Bonded trucking of Air Cargo from and to ICD from Gateway Airports
- Port Side Container Terminal at Tuticorin Port with rail facility.
- Full-fledged Multi-modal Logistics Park at Kadakola (Nanjanagud, Mysore)
- End to End Distribution Logistics under 5-PL
- Hiring of vessels for coastal shipping for which tender has been called for.





THANK YOU